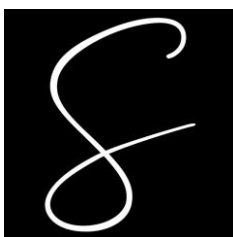


# SINAHOLZ

Your Virtual  
Woodworking Assistant



We are your complete  
design and engineering team.

[sinaholz.com](http://sinaholz.com)

VWA

# About us

We are here with the experience of 20 years of working in panel industries to be your **assistant** for design, modelling, rendering, detailing and generating the production data for the machinery and the BOMs required.

## **Save** time and money

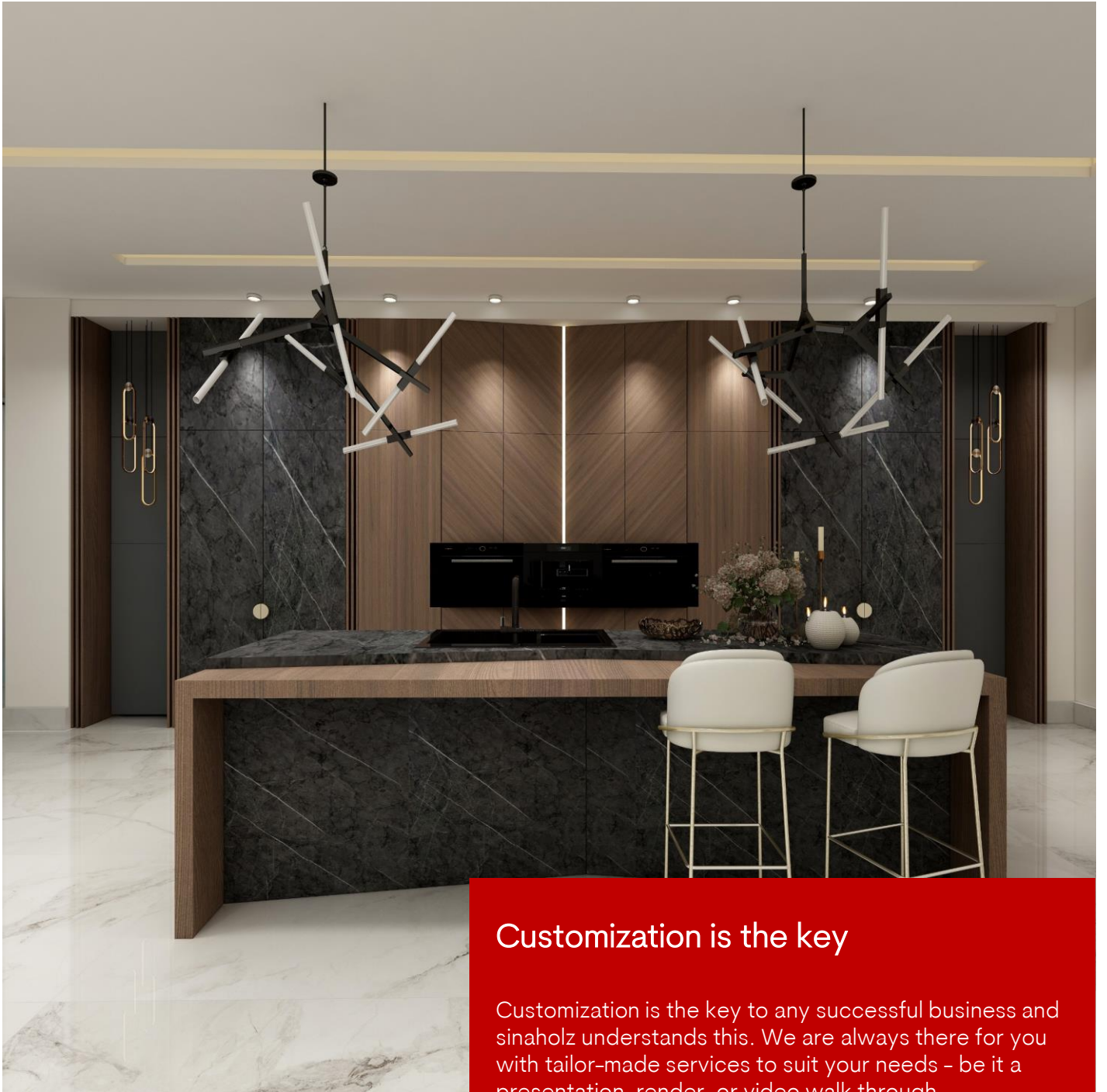
No need to invest in software and hardware for managing your designs and processing them

## **Reduce** the risk of customization

Customization is becoming a need for businesses, but there are problems in doing it; one of them is to give a real image to the client of how the work will look like at the end, and the second part is how they calculate the sales price and at the end product of the order needs data.

## **Increase** the chance of getting the order

Presentation is an essential part of sales. Having a team working only on this matter is not easy to manage.



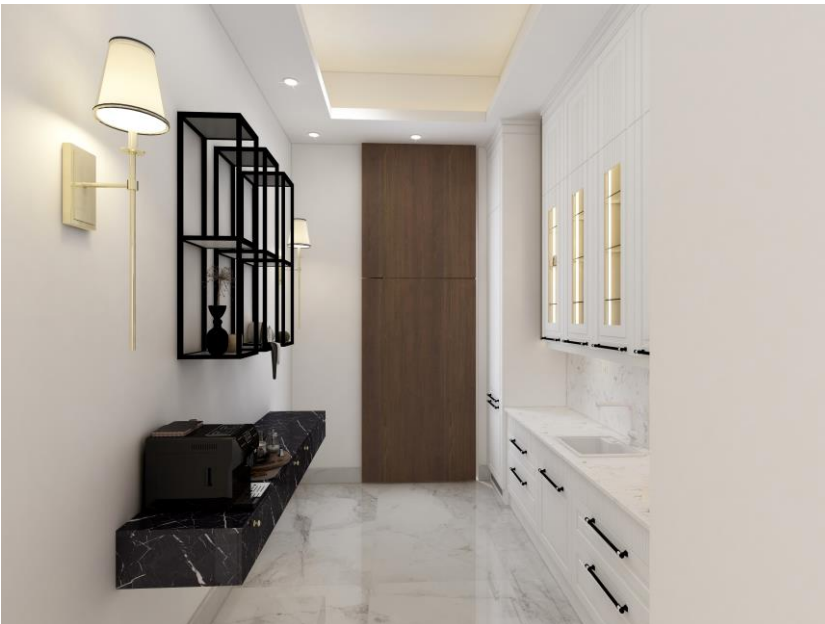
## Customization is the key

Customization is the key to any successful business and sinaholz understands this. We are always there for you with tailor-made services to suit your needs – be it a presentation, render, or video walk through.



## Design that speaks volumes

Create stunning visuals with ease using our immersive 3D technology. There's no need for you to be an expert designer or developer - we'll do all the hard work for you.



## Release your presentation potential

We are ready to help you create powerful presentations with video walkthroughs, real renders and more. No need for hours of editing!



## Self-contained design office in one place

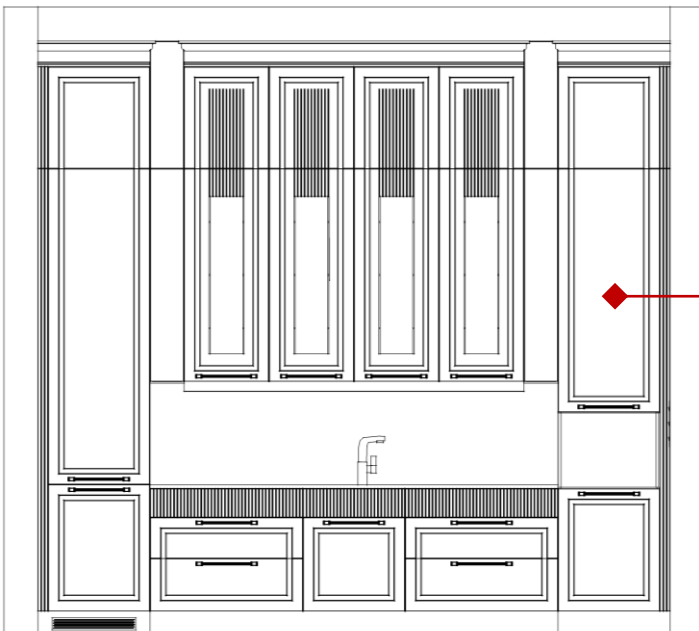
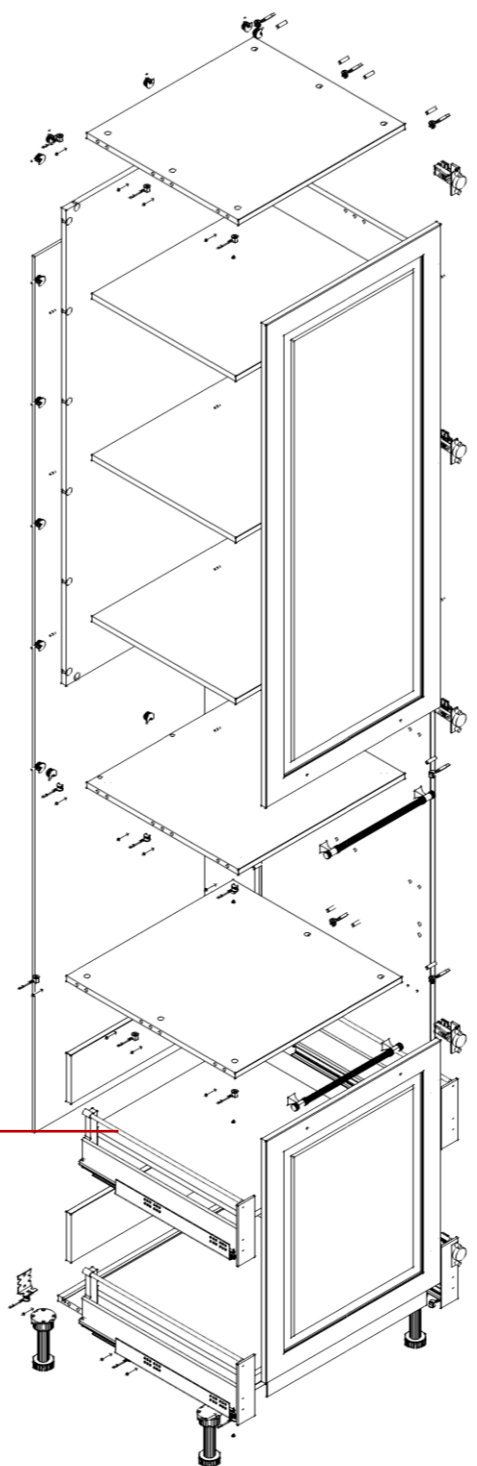
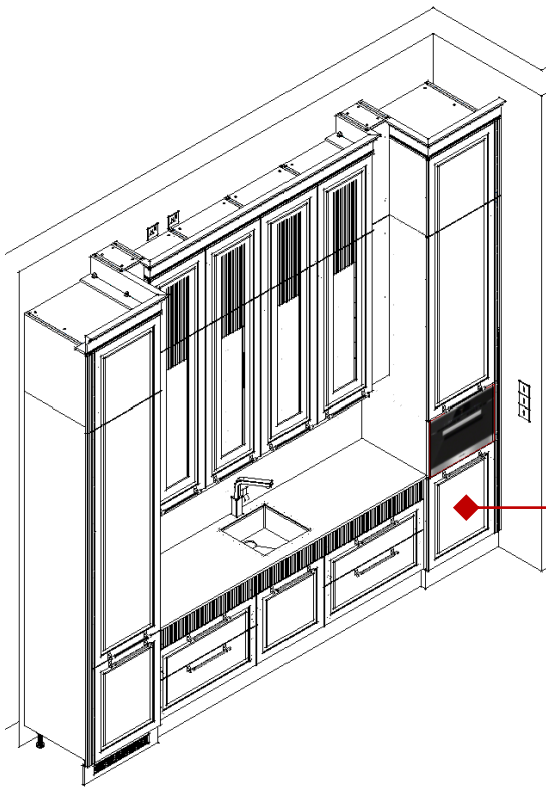
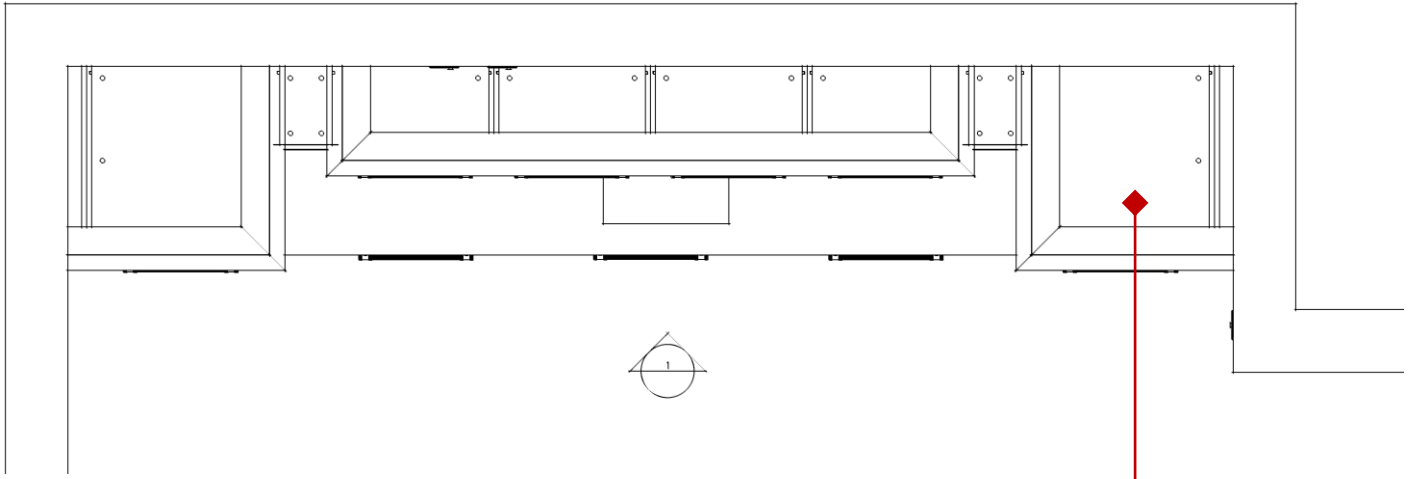
Say goodbye to expensive monthly rents and long commutes. Sinaholz offers everything you need in one place - at a price that won't break the bank!

# Services

- Design
- Modeling in 3D
- Realistic Image & Video Rendering
- Virtual Tours in 3D
- Detail
- BOM Generation

# Products that we can support

- Kitchen
- Wardrobe & Walk in Closet
- Bathroom Cabinet
- TV Unit

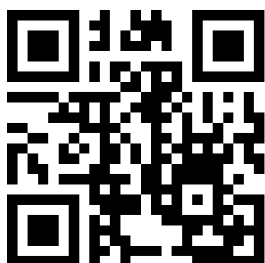


## Cutting List

Material	Description	Length	Width	Qty
Carcase Material	Right Side Panel	2600	600	1
	Bottom Shelf	568	600	1
	Fixed Shelf	568	576	1
	Drawer Bottom	491,5	530	2
	Drawer Side	480	144	2
	Fixed Shelf	568	516	1
	Adjustable Shelf	567	490	3
	Top Shelf	568	516	1
	Back Panel	1407	568	1
	Front Material	Left Side Panel	2600	600
Door		718	597	1
Door		1428	597	1

## BOM

Description	Qty	Unit
<b>Material</b>		
Carcase Material	5,1	m2
Carcase Material Back Panel	1,5	m2
Door Material	2,84	m2
<b>Surface</b>		
Surface Color 1	2,84	m2
<b>Edge Band</b>		
Carcase Edge Band	7,53	lm
<b>Hardware</b>		
Leg(s)	4	pcs
Minifix	24	pcs
Wooden Dowel	32	pcs
Handle	2	pcs
Hinges	5	pcs
Fix-Shelf Connector	18	pcs
Adj-Shelf Connector	12	pcs
Metal Box Drawer(s)	2	Sets



You can watch the video render on YouTube by scanning the code or clicking [here!](#)



Hammer Straße 39  
48153 Münster  
Deutschland  
+49 251 2373 740  
[info@sinaholz.com](mailto:info@sinaholz.com)  
[www.sinaholz.com](http://www.sinaholz.com)

